

# Actuator Model Numbering Code

0000	-	0	0	0	00	-	0	0	0
1		2	3	4	5		6	7	8

1. MODEL NO.	
MD10	Direct Diaphragm Actuators
MD11	Reverse Diaphragm Actuators
MD20	Rotary Diaphragm Actuators
DA10	Cylinder Actuators
DA20	Rotary Cylinder Actuators

2. DESIGN	
A	Standard
B	Top Handwheel
C	Side Handwheel

3. SIZE	
A	280mm
B	360mm
C	450mm
D	550mm
E	147sq.in
F	200sq.in
G	250sq.in

4.MOUNT DIA	
A	54mm
B	71mm
C	90mm
D	127mm

5. STROKE	
1	20mm
2	25mm
3	30mm
4	40mm
5	60mm
6	90mm
7	130mm
8	150mm
9	180mm
10	230mm
11	250mm
12	300mm

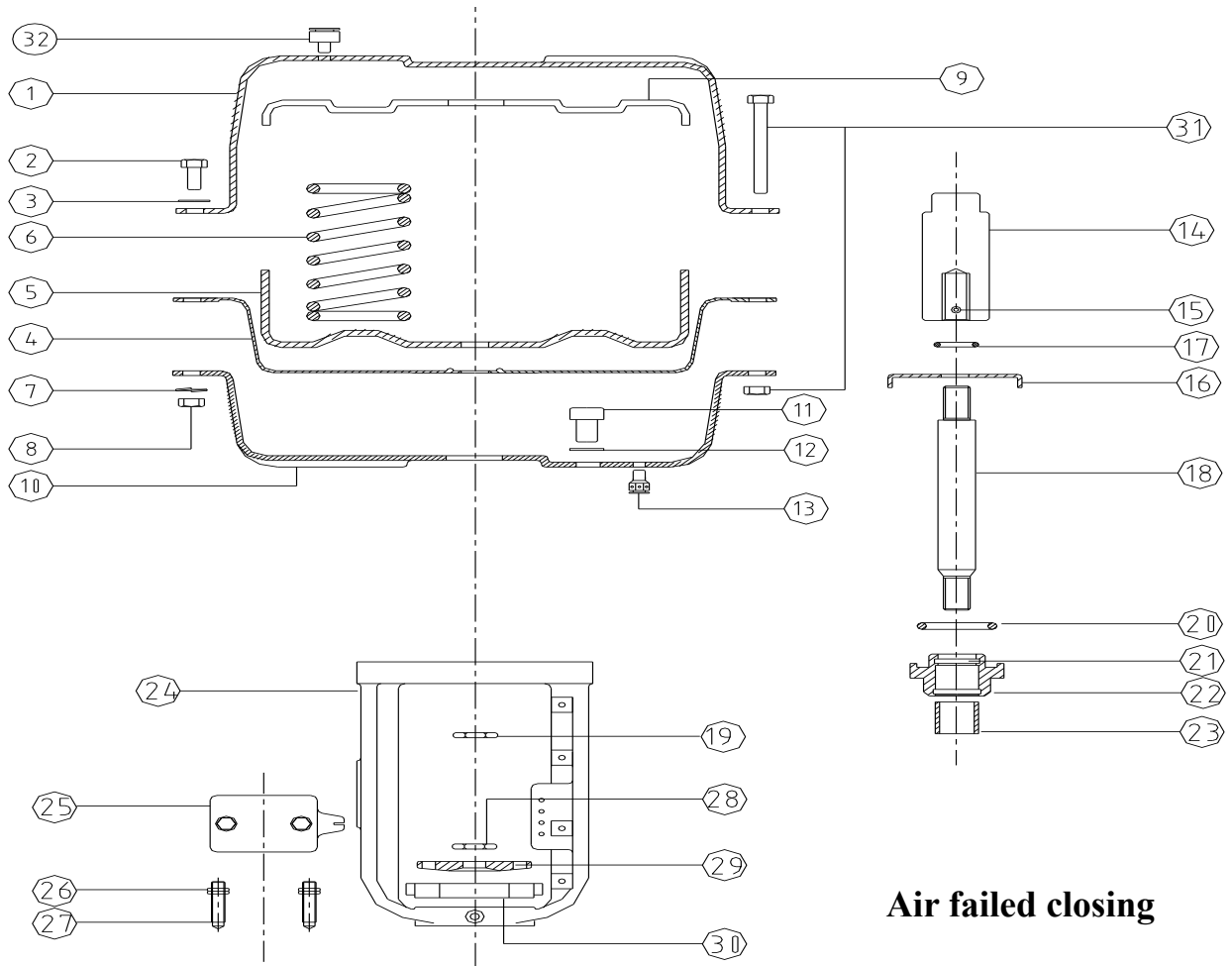
6. STEM THREAD	
A	M8 x P1.0
B	M10 x P1.25
C	M12 x P1.25
D	M14 x P1.5
E	M16 x P1.5
F	M20 x P1.5
G	M22 x P1.5
H	M33 x P2.0
I	M39 x P2.0

7. SPRING RANGE	
A	0.2 ~ 1.0 kg/cm <sup>2</sup>
B	0.8 ~ 2.0 kg/cm <sup>2</sup>
C	1.2 ~ 3.0 kg/cm <sup>2</sup>

8. OPTION	
-	No Application
A	3/8" Air Connection
B	1/2" Air Connection
C	3/4" Air Connection

# Pneumatic Actuator

## Multi Spring type Diaphragm Actuator Modell Number : MD 11 TYPE

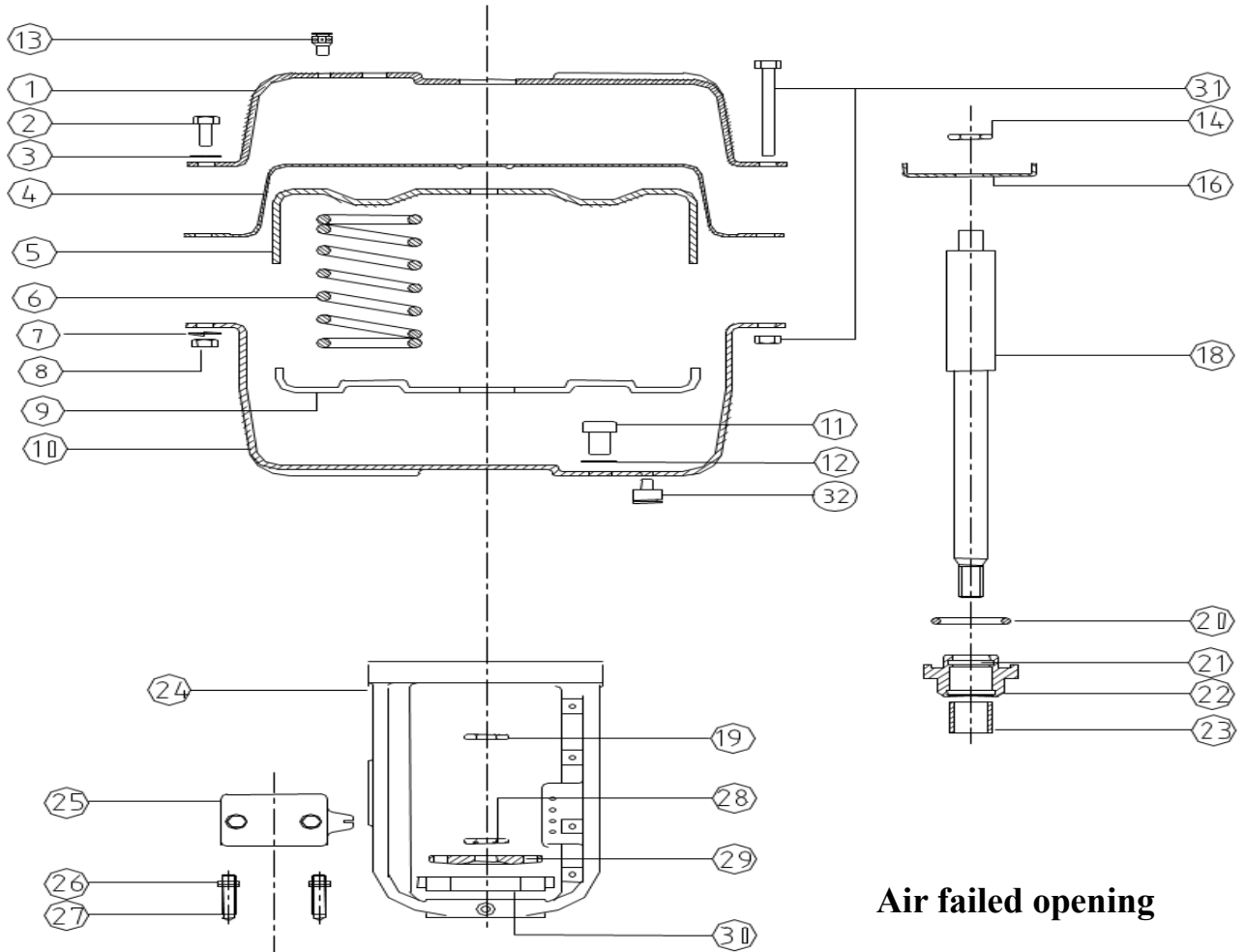


**Air failed closing**

REF	DESCRIPTION	REF	DESCRIPTION
1	TOP CASE	17	TEFLON RING
2	CASE BOLT	18	ACTUATOR STEM
3	CASE P/W	19	LOCK NUT
4	DIAPHRAGM	20	O-RING
5	DIAPHRAGM PLATE	21	O-RING
6	SPRING	22	GUIDE BUSH
7	CASE S/W	23	DU BUSHING
8	CASE NUT	24	YOKE
9	SPRING HOLDER	25	STEM CLAMP
10	BOTTOM CASE	26	PACKING STUD NUT
11	HEXAGON GROOVE BOLT	27	PACKING STUD
12	COPPER RING	28	COUPLING NUT
13	AIR CONNECTOR	29	PACKING FLANGE
14	STOPPER	30	CLAMP NUT
15	STOPPER LOCK BOLT	31	LONG BOLT SET
16	SPACER	32	AIR VENT CAP

# Pneumatic Actuator

## Multi Spring type Diaphragm Actuator Modell Number : MD 10 TYPE



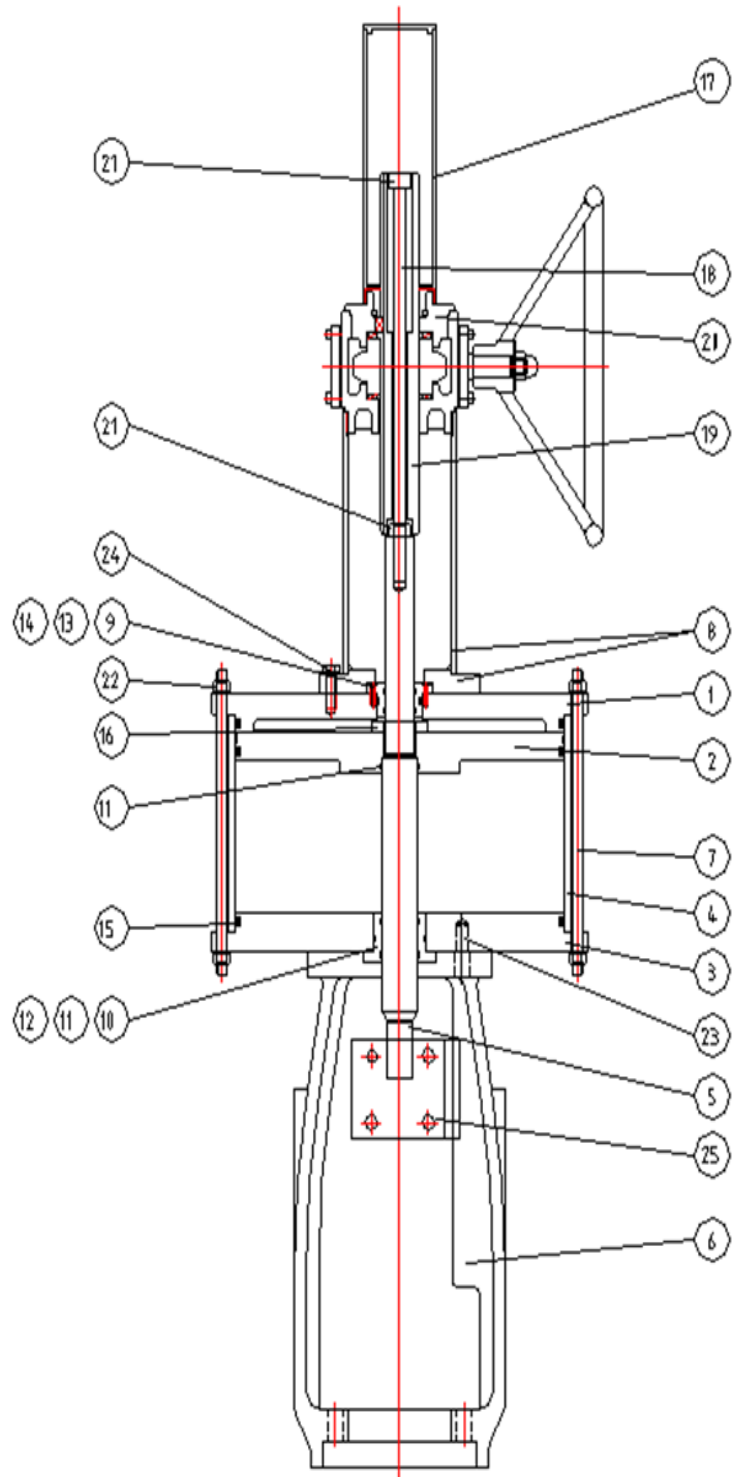
**Air failed opening**

REF	DESCRIPTION	REF	DESCRIPTION
1	TOP CASE	17	TEFLON RING
2	CASE BOLT	18	ACTUATOR STEM
3	CASE P/W	19	LOCK NUT
4	DIAPHRAGM	20	O-RING
5	DIAPHRAGM PLATE	21	O-RING
6	SPRING	22	GUIDE BUSH
7	CASE S/W	23	DU BUSHING
8	CASE NUT	24	YOKE
9	SPRING HOLDER	25	STEM CLAMP
10	BOTTOM CASE	26	PACKING STUD NUT
11	HEXAGON GROOVE BOLT	27	PACKING STUD
12	COPPER RING	28	COUPLING NUT
13	AIR CONNECTOR	29	PACKING FLANGE
14	STOPPER	30	CLAMP NUT
15	STOPPER LOCK BOLT	31	LONG BOLT SET
16	SPACER	32	AIR VENT CAP

# Pneumatic Actuator

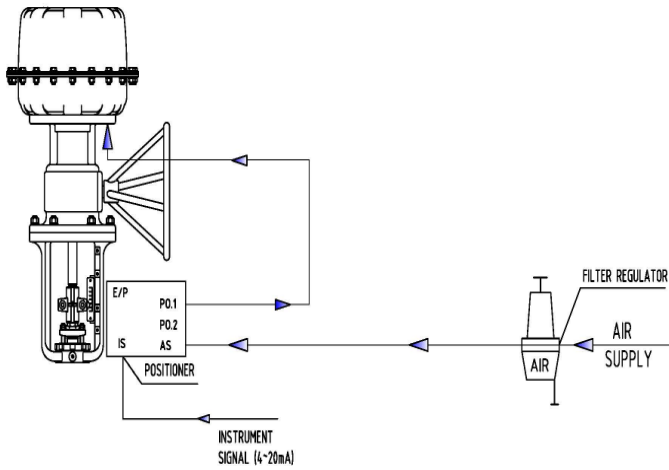
## Double Acting Actuator Modell Number : DA 10

No.	Description
1	Upper Flange
2	Piston
3	Lower Flange
4	Cylinder
5	Stem
6	Yoke
7	Cylinder Bolt
8	Stem Guide Flange
9	Upper Bush
10	Lower Bush
11	O-Ring
12	O-Ring
13	O-Ring
14	O-Ring
15	O-Ring
16	Stop Nut
17	Screw Guide
18	Setting Bar
19	Screw
20	Worm gear box
21	Setting Nut
22	Cylinder Nut
23	Wrench Bolt
24	Hex. Bolt
25	Link

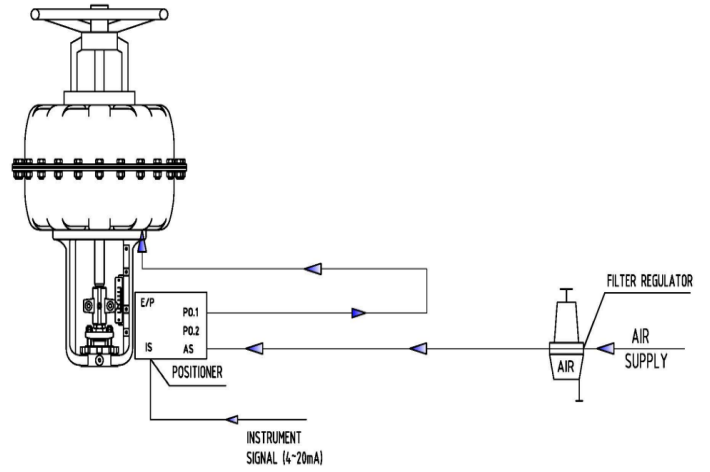


# Pneumatic Diagram

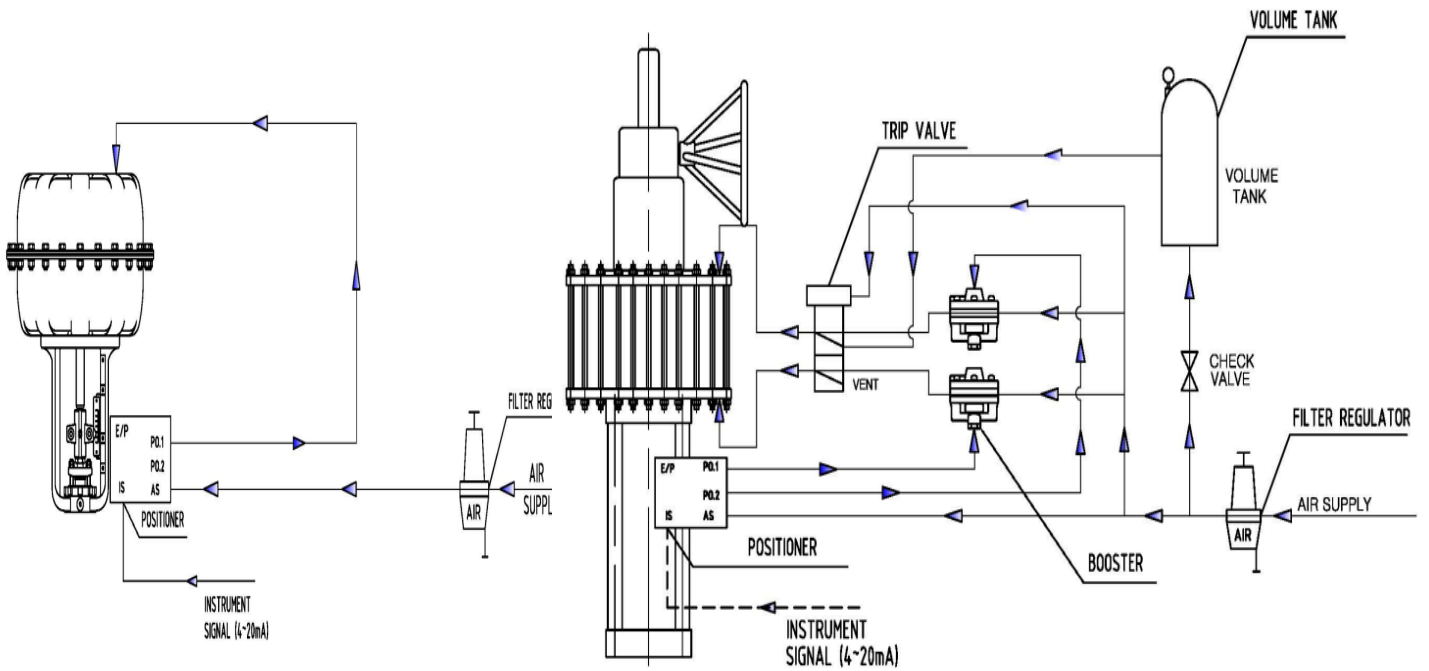
**PNEUMATIC DIAGRAM**



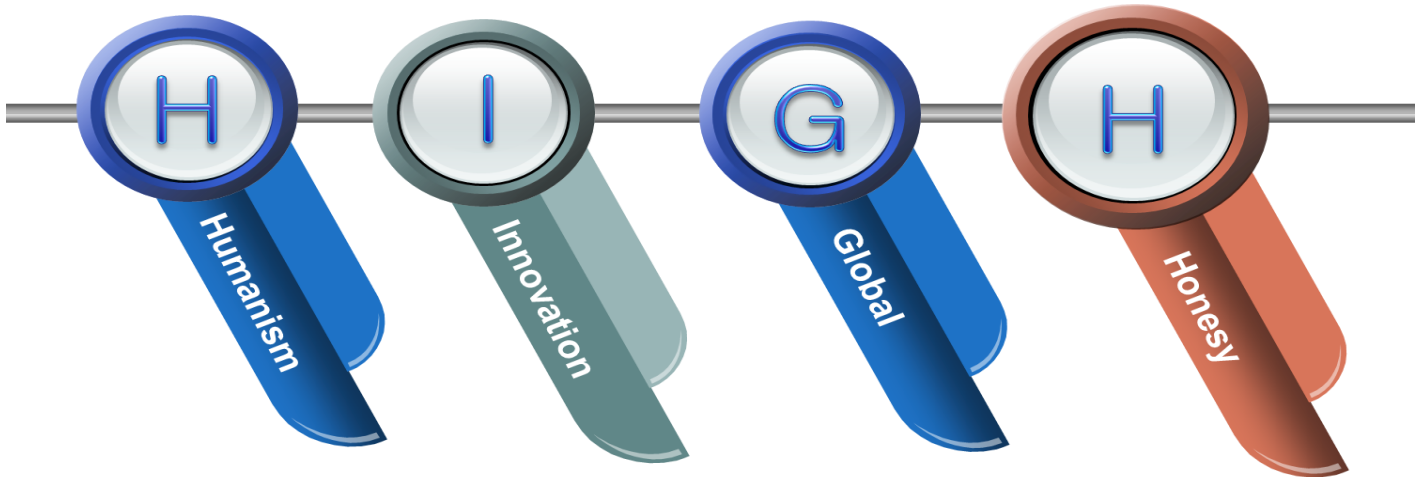
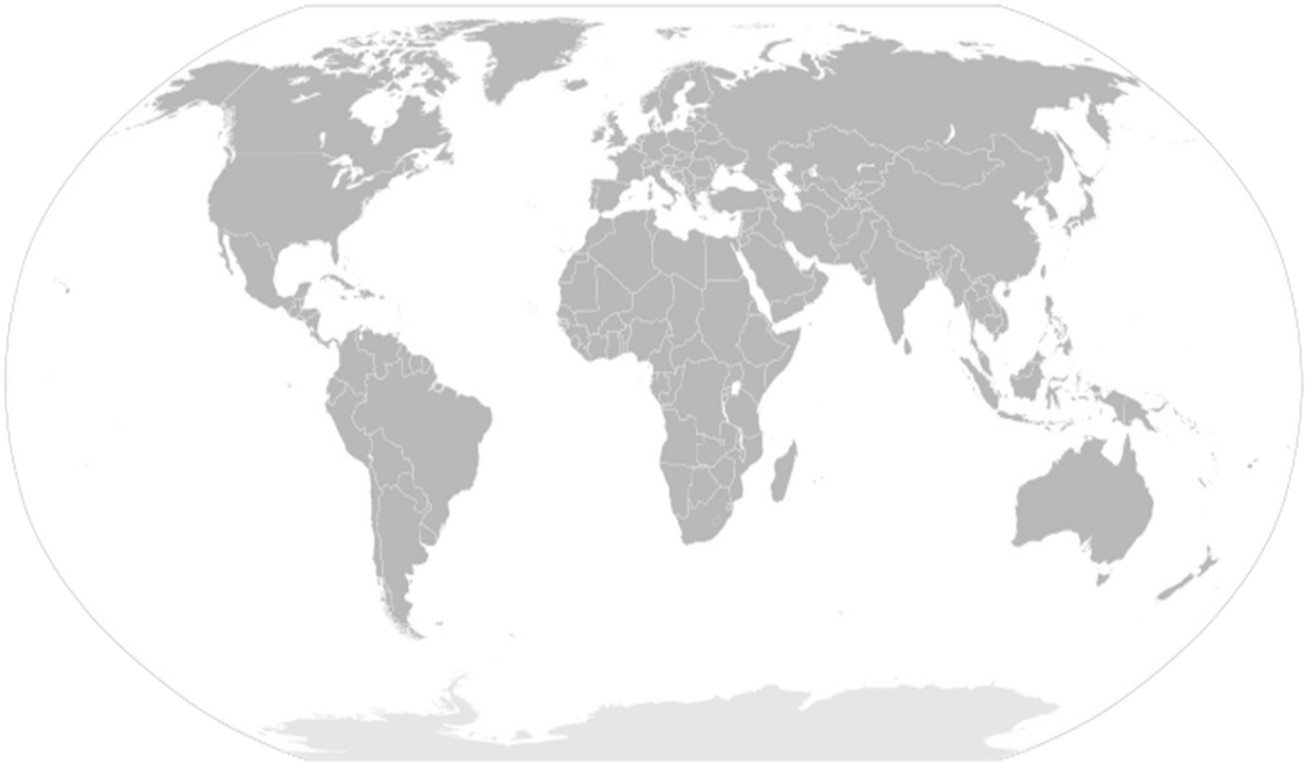
**PNEUMATIC DIAGRAM**



**PNEUMATIC DIAGRAM**



THE HANIL First humans think.



NINE E&C Corp.

Address : #402-060 , 137, Yeomjeon-ro,  
Nam-gu, Incheon, Korea

Rep. : +82 (0)32-282-8209

Fax. : +82 (0)32-280-8299